



# MOVING FORWARD

AHS YEAR IN REVIEW 2010



COLLEGE OF APPLIED HEALTH SCIENCES

Knowing is not enough;  
we must apply.

Willing is not enough;  
**we must do.**

– Goethe





## A MESSAGE FROM THE DEAN

It has been another challenging but very positive year for the College of Applied Health Sciences. I am happy to report that the state of the College remains strong. I could not be more proud of the outstanding accomplishments of our faculty, students, staff, and alumni.

In light of an economic environment that continued, and continues, to be difficult, we gathered as a faculty in September to rededicate ourselves to our goals of excellence in scholarship, undergraduate and graduate education, and outreach programs for individuals and communities. We discussed ways to manage our resources most effectively to achieve our goals, and we framed an action plan.

The national and international leadership of our work was clearly in evidence at the symposium, “Redefining Disability: New Directions in Research and Practice,” that was jointly sponsored by the College’s Center on Health, Aging, and Disability and the Health and Wellness Research Initiative. More than 165 participants from across the university and the community came together to learn about recent advances and to focus on what still needs to be done. The symposium featured Dr. John McDonald, director of the International Center for Spinal Cord Injury at Kennedy Krieger Institute, who shared exciting developments in nervous system repair. You can read about the symposium in this issue of *Moving Forward*, and learn about some of the fascinating interdisciplinary research underway in the College of Applied Health Sciences and across the campus.

We continue to challenge our students to expand their education through experiential learning opportunities. In the following pages, we’ll tell you about some of the ways in which we take students out of the classroom and into communities—locally, nationally, and sometimes globally.

Once again, we honored alumni who distinguished themselves in their professional careers and public service with our 2010 AHS Distinguished Alumni Awards and Harold Scharper Awards. And, of course, we want to recognize and thank all of those who have so generously supported AHS, our faculty, and our students. We would not be the College we are without you.

In just a few short months, we will begin to move into the new north wing of Huff Hall. What a fitting symbol of the strength we derive from our caring community of friends and alumni, and of the growth that can be achieved when you stay true to your mission. I promise you that we will never lose sight of what makes our College special, and our work so important.

Tanya M. Gallagher



# REDEFINING DISABILITY

Is it possible to restore function in a damaged nervous system? Can we do anything to encourage brain cell regeneration in adulthood? What are the implications of research on cross-modal brain plasticity for the rehabilitation of hearing loss and deafness?

These and other questions were addressed in a symposium sponsored by the Center on Health, Aging, and Disability of the College of Applied Health Sciences and the University of Illinois Health and Wellness Research Initiative. More than 165 participants from campus and the community attended the symposium, titled “Redefining Disability: New Directions in Research and Practice,” at the Alice Campbell Alumni Center on December 9.

### **Dogma inhibits advances**

With speakers representing such various disciplines as medicine, psychology, aerospace engineering, kinesiology, and speech and hearing science, the symposium underscored the importance of interdisciplinary research, a point that University of Illinois President Michael Hogan emphasized in his remarks.

“The campus-wide [Health and Wellness Research] initiative brings together our best minds from different disciplines for collaborative research projects,” he said. “The initiative is forging connections that can lead to breakthroughs in health care. Thank you for your time. Thank you for your commitment, and thank you for your hard work to create better lives for those who need it most.”

“The dogma is that only 10 percent of those with spinal cord injuries regain sensory function, that most motor recovery occurs within six months of the injury, and that few recover function after one year...this is nonsense.”

–Dr. John McDonald

Keynote speaker Dr. John McDonald, director of the International Center for Spinal Cord Injury at Kennedy Krieger Institute and associate professor in the Johns Hopkins School of Medicine, agreed that interdisciplinary teams are necessary to address health care challenges. He said the biggest obstacle to finding solutions, however, is dogma.

His research has demonstrated that contrary to what was believed, connections between the spinal cord above and below the site of injury are not fully severed, and he is working to find out how to make the connections that continue to exist fully functional. He has also shown that activity-based restoration therapy using Functional Electrical Stimulation cycling can increase muscle mass and reduce complications in people with spinal cord injuries, even years after the initial injury, greatly increasing their quality of life. The challenge here, he said, is to make the therapy affordable for home use and widely available.



John McDonald

“Free thought is what accomplishes goals.”

“This is an amazing time,” said Dr. McDonald, who founded the International Center for Spinal Cord Injury in 2005 on the philosophy that individuals with paralysis can always hope for recovery of sensation, function, mobility, and independence. He urged his audience to resist dogma in their work, saying, “Free thought is what accomplishes goals.”



# UNIVERSITY OF ILLINOIS REPRESENTS

## Redefining Disability, Continued

University scholars also impressed the audience with research on the central nervous system that challenged existing dogma. For example, scientists believed until the 1990s that nerve cells did not regenerate, which meant that we lost brain mass as we aged and our allotted number of cells died. Since then, research has shown that certain areas of the brain grow new cells throughout the lifespan.



Psychology professor **Justin Rhodes** is using animal models to study neurogenesis in the hippocampus, which plays a significant role in long-term memory. He has found that exercise dramatically increases cell growth in this area. Dr. Rhodes is working to find out why this is so, and is committed to translating his work to humans.



Professor **Jake Sosnoff** of the Department of Kinesiology and Community Health studies the neurophysiology of motor control. He is working with departmental colleague **Rob Motl** and others to investigate the neurological process that underlies spasticity in people with multiple sclerosis. Their work has shown that acute rhythmic exercise reduces spasticity, and they hope to develop a practical intervention program.



**Dr. Timothy Bretl's** work focuses on brain-machine interfaces. A professor in the Department of Aerospace Engineering, he develops tools for motion analysis, planning, and control, and is using the tools to develop a feedback loop between human users and prosthetic devices.



Speech and Hearing Science professor **Matt Dye** investigates brain plasticity. He is particularly interested in the impact of auditory deprivation on visual function, and has found that people who are deaf have better selective peripheral attention than people with normal hearing. He hopes to translate his research into practical applications related to cochlear implantation.



**Dr. Brad Hedrick**, director of the Division of Disability Resources and Educational Services, described the research underway in his unit, including the development of a wireless personal control device with which students with severe physical disabilities can independently call and operate elevators.

The “Redefining Disability” symposium will soon be available in its entirety on the website of the Center on Health, Aging, and Disability, <http://chad.illinois.edu>.

## The Ghana Project

According to the World Health Organization, approximately 10 percent of the world's population has a disability, making individuals with disabilities the largest minority group. In many developing nations, people with disabilities have little opportunity to support themselves or to take part in meaningful life activities. In 2007, the Center on Health, Aging, and Disability created the International Disability Sport Outreach Program to empower individuals with disabilities through athletic training camps.

Jean Driscoll, associate director of development in the College of Applied Health Sciences and former Olympic and Paralympic athlete, shared her experiences of working with individuals with disabilities in Ghana during the "Redefining Disabilities" symposium. She observed, "Through the powerful intervention of sport, individuals can develop strength, confidence, and life skills that allow them to focus on their abilities and to be contributing members of society." Using wheelchair track, Driscoll and others have taught Ghanaians with disabilities to care for their bodies, improve their physical strength, be part of a team, and advocate for their needs. Because of the outreach program, many individuals used wheelchairs for the first time. The country sent athletes to the Paralympic Games in Athens, Greece, and Beijing, China. In her most recent trip to Ghana, completed this summer, Driscoll met with several high-ranking officials in the Ghanaian government to enlist their support for persons with disabilities.



## First I-LEAP Scholars Graduate

The first full group of scholars in the Mannie L. Jackson Illinois Academic Enrichment and Leadership Program (I-LEAP) joined our alumni ranks in May 2010. Most are currently enrolled or preparing to enroll in graduate programs in law, sports administration, speech-language pathology, recreation administration, labor and employment relations, physical therapy, and rehabilitation counseling. One former scholar is co-developing a bilingual health organization for Latina women.

First-generation students, students from underrepresented groups, student athletes, and students recognized by the President Awards Program and Educational Opportunities Program may participate in the free program, which offers mentorship, tutoring, leadership training, and other services. I-LEAP has been recognized nationally as an outstanding advising program. In 2010, the program's director, Sheri Shaw, received the Larine Y. Cowan Make a Difference Award from the University of Illinois Office of Equal Opportunity and Access.

Group photo, first row, left to right:  
Nicole Cordero, Kinesiology; Jennerette Smith, Recreation, Sport and Tourism; Alison Yuhus, Speech and Hearing Science; Christa Jalali, Speech and Hearing Science; Sarah Hernandez, Community Health.

Second row, left to right:  
Jeremy Butler, Kinesiology; Melissa Pedraza, Kinesiology; Brett Zimmerman, Recreation, Sport and Tourism.

Missing from the group photo:  
Jenay Lewis, Community Health.



## HEALTH CHALLENGES REQUIRE COMPLEX RESPONSE

The more than 78 million U.S. citizens who were born during the post-World War II baby boom are getting older. Those born in the first year of the boom will turn 65 in 2011, while those bringing up the rear of that generation will celebrate 47th birthdays. As one might expect, the population of individuals with disabilities will also increase in the years ahead. According to a report issued in 2010 by the National Council on Disability, the number of people with hearing loss and vision impairment will rise by 40 percent in the next 15 years. Mobility limitations will also increase dramatically.

Along with projected changes in the racial and ethnic composition of the country, these population demographics pose important and complex challenges to those who are concerned with issues related to health and quality of life.

Through its pilot grants program, the Center on Health, Aging, and Disability is helping faculty in the College of Applied Health Sciences to engage in interdisciplinary research that will address the needs of our changing population. AHS scholars are collaborating with colleagues across campus and around the world to advance the state of knowledge related to issues such as risk factors for diabetes, physical activity in diverse cultures, age-related changes in the brain's language processing abilities, and more.



Flavia Andrade



Torrey Loucks





## Comprehensive View of Obesity

Promoting healthy eating and regular physical activity has been identified as a health priority in the United States, in part to minimize the incidence of obesity and obesity-related disorders such as diabetes. Life transitions in early adulthood, such as starting college, can have a lasting impact on health, with the disruption of established diet and exercise routines being associated with declines in physical and psychological well-being.

**Dr. Flavia Andrade**, assistant professor in the Department of Kinesiology and Community Health, is on a mission to evaluate the influence of biological, lifestyle, social, and environmental factors on the development of obesity. Working with colleagues in the Department of Human and Community Development and the Department of Food Science and Human Nutrition, she is taking part in a collaborative international research program called UP-Amigos.

## Neuromotor Changes in Aging

The ability to control muscle behavior to accomplish daily activities is an important component of the quality of life. As we age, manual muscle control declines, potentially affecting our ability to care for ourselves significantly. Conversely, muscle control of the mouth appears not to decline in otherwise healthy older people.

**Dr. Torrey Loucks**, an assistant professor in the Department of Speech and Hearing Science, is leading a study that will compare manual and oral muscle control to examine the neurological bases of age-related declines in movement control. He and colleagues Dr. Brad Sutton of the University of Illinois Department of Bioengineering and Dr. Jacob Sosnoff of the Department of Kinesiology and Community Health are

“The overall goal of the study is to document the types of habits that students develop when they enter college, and how the ‘family environment’ really matters,” Dr. Andrade said. She and Drs. Marcela Raffaelli, Margarita Teran-Garcia, and Angela Wiley are collaborating with a multidisciplinary team of researchers at Mexico’s Universidad Autónoma de San Luis Potosí, which will provide access to a large sample of college applicants each year. Participants selected for the study will self-report measures of diet, exercise, family mealtime interactions, and psychological well-being; complete a routine medical exam; and provide blood samples through the course of the study.

“We want to look at the biomarkers for heart disease and obesity and try to understand why people in Mexico are more prone to diabetes,” Dr. Andrade said. Ultimately, the researchers hope to develop interventions at the level of family, university, and work environment.

investigating whether characteristics of the nerve fibers that connect the brain with the muscles can predict selective declines in fine motor control with age.

The researchers will use magnetic resonance imaging and measurement of fine muscle control to examine age-related declines in adults from 65 to 80 years old. The study will provide the first critical evidence that white matter integrity such as myelination, which allows nerve impulses to travel faster, has a role in age-related declines in muscle control as well as in the relative preservation of certain muscle systems. It will also identify a biomarker of neuromuscular health that will be valuable for assessing age-related muscle control declines. Future studies will utilize the biomarker to quantify and validate approaches to preserving muscle control.

## Center on Health, Aging, and Disability Pilot Grants

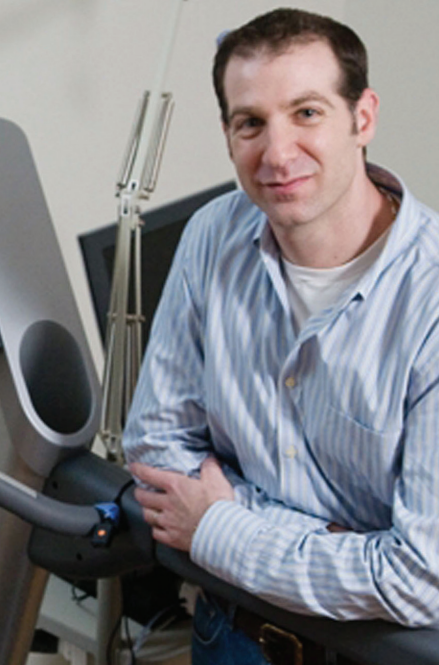
**Flavia Andrade**, *Department of Kinesiology and Community Health*, “UP-Amigos: A Collaborative Investigation of Risk Factors Associated with the Development of Obesity and Related Diseases”

**Christopher Grindrod**, *Department of Speech and Hearing Science*, “Age-related Changes in the Cerebral Hemispheric Contributions to Sentence-level Integration”

**Torrey Loucks**, *Department of Speech and Hearing Science*, “Demyelination in Motor Pathways of the Central Nervous System Predicts Motor Control Reductions in Health Aging”

**Andiara Schwingel**, *Department of Kinesiology and Community Health*, “Cultural Perspectives on Physical Activity Among Older Latina Women”

**Scott Tainsky**, *Department of Recreation, Sport and Tourism*, “Promoting Health, Well-being, and Education Through Major League Baseball’s Reviving ‘Baseball in Inner Cities’ Program”



Charles Hillman



# SMARTER AFTER EXERCISE

Research has clearly demonstrated that mice benefit from exercise. For example, a study by scientists at the University of Cambridge in England and researchers at the National Institute on Aging in Baltimore found that mice who exercised performed better on memory tests. The study, published in the *Proceedings of the National Academy of Sciences*, also found that active mice grew more new cells in a part of the brain linked to memory. **Can the same be true of humans?**

Among the scholars focused on this exciting area of research is Dr. Charles Hillman of the Department of Kinesiology and Community Health. He had already shown that physical activity positively affected cognitive performance in older adults when he expanded his research to examine the relationship between fitness and cognitive function in preadolescent children.

## **FITKIDS has impact**

Dr. Hillman's early research with this group included an assessment of children's performance on a modified flanker test, in which subjects respond to a centered item surrounded by distracting symbols. He found that children with higher fitness were better able to filter out unnecessary information and meet the demands of the task.

Using magnetic resonance imaging, he also investigated the links among fitness, the size of the hippocampus, and memory in preadolescents. Higher-fit children showed greater hippocampal volume and better performance on memory tasks compared to lower-fit children. It was the first study to indicate that aerobic fitness may be related to the structure and function of the preadolescent human brain.

Dr. Hillman conducts much of his research with this group through his Fitness Improves Thinking or FITKIDS program, a four-year clinical study funded by the National

Institutes of Health. It is the first intervention study to manipulate fitness in order to promote beneficial changes in cognition. After being pre-tested to assess cognitive health and function, seven- to nine-year-old, largely sedentary children are randomly assigned to intervention and control groups. The intervention group attends a free afterschool program that engages children in at least 60 minutes of moderate to vigorous physical activity each school day. At the end of the year, the children once again take the battery of tests that measure cognitive health and function.

So does exercise make the children smarter? As Dr. Hillman told CNN News in April, "If your definition of 'smart' is your ability to perform tasks and hold them in your working memory, your ability to pay attention to relevant items in the environment and to ignore distracting items, or process information more quickly, or perform multiple tasks simultaneously, then I think we can talk about being smarter."

Dr. Hillman's work has been used to support legislation in two states that increased the mandatory minimum number of physical education units in schools. With childhood obesity rates on the rise and the levels of physical activity among children at alarming lows, he is hoping that his findings will continue to give rise to legislation as well as to changes at home.



## DRES and University Housing Dedicate Nugent Hall

Students with severe physical disabilities have a new home on campus. On October 22, 2010, Timothy J. Nugent Hall was formally dedicated. Seventeen students who receive the services of the Beckwith Program of the Division of Disability Resources and Educational Services (DRES) are for the first time living in integrated University housing with able-bodied students. The first new residence hall in more than 40 years, Nugent Hall features keyless entries, adjustable hospital beds, and SureHands lift technology that increases the mobility of students with disabilities within their rooms. The residence hall is named for Dr. Timothy Nugent, who founded DRES in 1948.

In observance of Disability Awareness Month in October, the Division of Disability Resources and Educational Services, the Beckwith Program, and University Housing co-sponsored a panel discussion featuring former and current Beckwith residents. About 200 students attended the event, which was held on October 20th in the multipurpose room of Nugent Hall. The lively and frank discussion—which addressed everything from the emotional and physical toll of acquiring a disability later in life to the cost of wheelchairs to

the sex lives of people with physical disabilities—kept the audience riveted for more than two hours.

Last year, DRES served more than 1,000 students with disabilities. Nearly three-quarters of the students—many of whom had previously been undiagnosed—had cognitive and psychological disabilities, including learning disabilities, Attention Deficit Hyperactivity Disorder, acquired brain injury, bipolar disorder, and depression. Dr. Brad Hedrick, director of DRES, said the increase in the numbers of students with cognitive and psychological disabilities has challenged DRES to expand its services.

“Among the research efforts in DRES, our scientist-clinicians are working to identify the particular needs of this population and the kinds of support they need,” he said. “We continue to have good success with most of the students with whom we work, almost 94 percent of whom graduate. That’s higher than the campus graduation rate.” Dr. Hedrick said that people with depression are the only group that graduates at a lower rate. He says DRES will focus on serving this group more effectively in the coming year.



## North Addition Nears Completion

Progress on the north addition to Huff Hall has been steady, and we are on track to begin moving in this spring. From breaking ground just about a year ago, we are now seeing the interior take shape. You can see the amazing process, from razing the old north wall to the present, at [huffnorthaddition.ahs.illinois.edu](http://huffnorthaddition.ahs.illinois.edu); click on Construction Progress Gallery.

Joining our outstanding company of supporters of the north addition are Ray and Linda Whitney, for whom the reception area of the Center on Health, Aging, and Disability will be named. Pictured here with Dr. Timothy Nugent, Mrs. Whitney said she is excited to support the continuation of his important work.

“I think the research is awesome,” she said. “I’m so excited that they’re finding new things every day to help people with and without disabilities.”

The completion of this exciting project not only fulfills the original vision of Huff Hall, but also provides us with state-of-the-art space for interdisciplinary research, instruction, and outreach in the areas of health, aging, disability, and public health.

## AHS Recognizes Outstanding Alumni

Alumni of the College of Applied Health Sciences and its Division of Disability Resources and Educational Services make significant and lasting contributions to their fields. Each year, the College recognizes their accomplishments with the Distinguished Alumni Award and the Harold Scharper Award.

### Dr. Frank J. Hayden

Professor Emeritus, McMaster University, and Special Olympics Visionary, Burlington, Ontario, Canada

**“I was always aware of a direct connection between whatever I was proposing or creating and my education and experience at the University of Illinois. It was here that I really acquired an understanding of and an appreciation for the logic, science, creativity, and, indeed, the passion required in the application of knowledge in our fields.”**

While completing his master's degree in 1958 and his Ph.D. in 1962 at the University of Illinois, Dr. Frank Hayden worked with Dr. Thomas Cureton in the Physical Fitness Research Laboratory. As a

faculty member in the University of Toronto's School of Physical and Health Education, he upended the widely-held belief that intellectual disabilities prevented individuals from developing the fitness and skill necessary to participate in sports programs when he demonstrated that children with intellectual disabilities responded well to strength and cardiovascular conditioning. His work led to a long association with the Joseph P. Kennedy Jr. Foundation, where he helped to develop the first Special Olympics Games in 1968. In 2000, he was made an Officer of the Order of Canada, his country's highest honor.

### Dr. Laura Kann

Chief, Surveillance and Evaluation Research Branch, Div. of Adolescent and School Health, Centers for Disease Control and Prevention, Atlanta, Georgia

**“It is amazing how one university can have such an impact, but there is little I have accomplished that can't be traced back at least in part to either my parents or the University of Illinois. Both taught me that there are no boundaries to what I can do.”**

Dr. Laura Kann completed her bachelor's degree in school health and safety education in 1982 and her master's degree in health education in 1983 at the University of Illinois. Upon completing her doctoral degree in health behavior at Indiana University in 1987, she joined the

Division of Adolescent and School Health in the Centers for Disease Control and Prevention. As head of the Surveillance and Evaluation Research Branch, she manages national and international surveys of health risk behaviors among adolescents and assessments of school health practices at the state, district, school, and classroom levels. A past president of the American School Health Association, she has received more than three dozen professional awards, including the Division of Health and Human Services' Secretary's Award for Distinguished Service.

### Dr. Hitoshi Nishino

President, Tokai University Fukuoka Junior College, Fukuoka, Japan

**“In a word, the College of Applied Health Sciences and the University of Illinois are ‘trustworthy’ as my chief source of wisdom. The memories of my experiences at the U of I encourage and comfort me in my daily life in Japan.”**

Dr. Hitoshi Nishino's research focuses on leisure behavior and daily activities among adolescents and older adults in Japan. He received his bachelor of education degree from Tokyo Gakugei Teacher's University in 1969, his master's degree in sports science from Tokai

University in 1978, and his Ph.D. in leisure studies from the University of Illinois in 1997. He was a faculty member and administrator at Tokai University from 1978 to 2010, when he was appointed president of the Tokai Fukuoka Junior College and a trustee of the Tokai Educational System. He established and was head of Tokai University's Department of Sport and Leisure Management, the first department to use the word “leisure” in Japan. Dr. Nishino also served as dean of the Tokai University Graduate School of Sports Science.

### Dr. Donald J. Schum

Vice President of Audiology and Professional Relations, Oticon, Inc., Somerset, New Jersey

**“The faculty of the Department of Speech and Hearing Science gave me the feeling, for the first time in my professional life, that what I specifically set out to accomplish would matter. They took the time to notice me as an individual and to foster a sense of my potential.”**

Dr. Donald Schum earned his bachelor's degree in speech and hearing science at the University of Illinois in 1982, his master's degree in audiology at the University of Iowa in 1984, and his doctoral degree in audiology at Louisiana State University in 1988. He was assistant

professor of otolaryngology and communicative sciences at the Medical University of South Carolina and assistant professor and director of the hearing aid lab at the University of Iowa. He joined Oticon as a senior audiologist in 1995, and was promoted to his current position three years later. He is co-editor of *Assistive Devices for the Hearing Impaired*, and currently serves on the executive board of the American Auditory Society and the editorial board of the *Journal of the American Academy of Audiology*.

# COLLEGE OF APPLIED HEALTH SCIENCES



From left to right, Harold Scharper Achievement Award winner Carl Suter, Dean Tanya Gallagher, Distinguished Alumni Award winners Dr. Hitoshi Nishino, Dr. Laura Kann, Dr. Donald Schum, and Dr. Frank Hayden, and Harold Scharper Humanitarian Award winner Tom Brown.

## The Harold Scharper Awards

Harold Scharper was the first paraplegic to attend the University of Illinois. Following his death in 1950, members of the Delta Sigma Omicron rehabilitation service fraternity and friends established the Harold Scharper Awards in his memory. Presented by the Division of Disability Resources and Educational Services, the awards are a tribute to the example he set for others with disabilities and are given in recognition of his preference that the unselfish achievements and services of others be recognized above all other things.

### **Carl Suter** Harold Scharper Achievement Award

Chief Executive Officer, Retired  
Council of State Administrators of Vocational Rehabilitation  
Bethesda, Maryland

*“Through the guidance of professionals like Dr. Tim Nugent, Joe Konitzki, and many others [at DRES], I was able to eventually gain not only my degree, but also a much better sense of the person I could become and what I would be able to contribute in life.”*

Carl Suter retired last fall from his position as Chief Executive Officer of the Council of State Administrators of Vocational Rehabilitation, where he waged many successful legislative battles to protect funding for vocational rehabilitation services. Prior to his service at the national level, Mr. Suter served as associate director of the Illinois Association of Rehabilitation Facilities, executive director of the Illinois Council on Developmental Disabilities, and director of the Illinois Office of Rehabilitation Services. In 2005, he was named the Justin Hart Distinguished Citizen of the Year by the Illinois Coalition of Citizens with Disabilities. Mr. Suter received his bachelor’s degree in speech communication from the University of Illinois in 1977.

### **Thomas R. Brown** Harold Scharper Humanitarian Award

Director  
National Veterans Wheelchair Games  
San Antonio, Texas

*“Attending the University of Illinois and being accepted into the DRES family opened up a new world of experiences for me. Living life to its fullest is a direct result of attending the University and participating in all of the DRES sports and activities.”*

After earning a bachelor’s degree in music education in 1971 and a master’s degree in therapeutic recreation in 1972, Tom Brown began a career in recreation therapy at the McGuire Veterans Administration Medical Center in Richmond, Virginia. A former wheelchair athlete, Mr. Brown assisted the VA in creating the National Veterans Wheelchair Games in 1981. They have become the largest annual wheelchair sports event in the world. In January, he was named acting director of the Office of National Programs and Special Events in the Department of Veterans Affairs. Mr. Brown has been inducted into the Basketball Hall of Fame’s Wheelchair Basketball Division and the Wheelchair Sports USA Hall of Fame.

# THE UNTOLD STORY



On February 7, 2010, 106.5 million people in the United States tuned into the Super Bowl, making it the most-watched broadcast in this country. A global television audience of 700 million followed the action of soccer's World Cup final on July 11. Sport and athletic events clearly occupy a central role in the lives of many people, and the towering figures of athletic competition have become part of our popular culture.

That those figures have typically been men speaks not to the lack of contributions by women in sport, but rather to the dearth of recognition for their efforts. It's an oversight that Professor Synthia Sydnor of the Department of Kinesiology and Community Health sought to correct, in part, with the Fall 2010 offering of KIN/SOC 249, Sport and Modern Society.

With funding from the Provost's Gender Equity Council and the sponsorship of the Ethnography of the University Initiative, Sydnor focused her course on the role of female faculty at the University of Illinois in the history of athletics and sports scholarship in the United States.

"Women in physical education at Illinois led the state and the nation in establishing the practices of physical education and the discipline of kinesiology," Sydnor said. "They introduced innovations such as national athletic tournaments for women and student teaching, things which today have national and international resonance, and helped to found scholarly organizations related to sport, play, and athletics, such as the North American

Society of the Sociology of Sport and the Association for the Study of Play."

## Leadership and Passion

Students worked in teams to gather information on physical education/kinesiology pioneers Louise Freer, Beulah Drom, Phyllis Hill, Carita Robertson, Laura Huelster, Jody Davenport, Susan Greendorfer, and Alyce Cheska. Using both archival research and interviews, they documented the lives and accomplishments of the women, producing posters which they presented at the Ethnography of the University student conference in November.

Marine Corps Gunnery Sergeant Peter Milinkovic, a sophomore in sociology, enrolled in KIN/SOC 249 to study popular sports like football, baseball, and basketball, so he was initially taken aback by the focus of the course. His disappointment changed to enthusiasm, however, as he delved into the life of Louise Freer, who was a professor of physical education from 1915 to 1949.

Join us on Facebook to share your memories of the PEW program and these pioneering women.

Search on College of Applied Health Sciences at Illinois.

“She was a ‘game changer,’” he said. “Her leadership pushed the envelope and her intent was based upon what benefited society rather than herself. The amount of work Louise Freer did for future generations should be recognized and celebrated much more than it is.”

Professor Carita Robertson, who joined the physical education faculty in 1925, also proved to be a fascinating subject, according to Lauren Fiscus, a sophomore in advertising who is completing a focus area in sport management.

“Carita Robertson had an art degree and was a member of the University Chorus,” she said. “She was such a well-rounded person, and so passionate about everything she did.”

Fiscus’ group found information in the University Archives, Robertson’s own publications, including her master’s thesis, and old issues of the student yearbook, the *Illio*. She said one of the most challenging aspects of the project was to bring all the information her group had found together into a coherent poster.

Sophomore and kinesiology major David Wisthuff’s group, on the other hand, found the most challenging part of the project was finding information on their subject, Jody Davenport. Little archival information existed, so they turned to the internet, where they found

an interesting connection between Professor Davenport and the current coach of the University of Illinois women’s golf team, Paula Smith. The group’s interview with Coach Smith became the main focus of the project. “While it was challenging, the lack of archival information also made the project that much more rewarding,” Wisthuff said. “Few knew the story of her life and how much of an amazing woman she was. Due to our efforts, her story will be told to more people and archived with the University.”

### To Be Continued

Indeed, all the work of Professor Sydnor’s class will become the focus of a web gallery and physical display that will be created during the Spring 2011 semester. “To date, nearly 1000 Ethnography of the University projects have been archived in the University’s digital repository, Illinois Digital Environment for Access to Learning and Scholarship, or IDEALS,” Sydnor said. “These IDEALS-published student research documents will form the core of the website and display on this forgotten history of University scholars and leaders in sport.”

*Professor Sydnor would like to acknowledge the contributions of Nancy Abelmann, co-director of the Ethnography of the University Initiative, professor of Anthropology, Asian American Studies, and East Asian Languages and Cultures, and director of the Center for East Asian and Pacific Studies; and teaching assistant Caitlin Vitosky, a master’s student in the Department of Kinesiology and Community Health.*

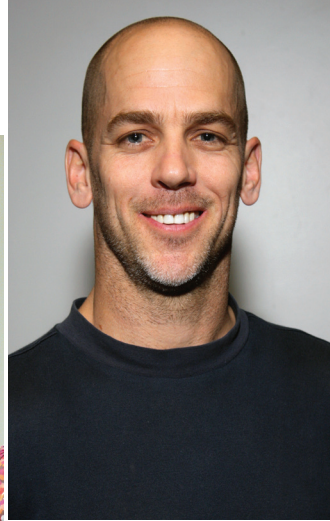


Pamela Hadley



Shevon Harvey

Ken Wilund



Laura Payne



# RESEARCH BRIEFS

## Pamela Hadley

Associate Professor :: Department of Speech and Hearing Science  
The nature of specific language impairment (SLI) in early childhood

Specific Language Impairment (SLI), which affects about seven percent of the population of kindergarten children, refers to significant difficulty in language development that is not caused by other developmental disorders. Many children with SLI begin to talk later than their typically developing peers. They lag behind other children in building adult-like sentences, and may have difficulty with grammatical structures such as tense and agreement marking on verbs and subject pronouns.

Pamela Hadley hopes to play a significant role in identifying children with SLI before they reach kindergarten. “If we don’t identify children until they are five, they’re already at school and expected to use language to learn,” she said. “If we can identify them during preschool, then we have more years to target language development when language is what they’re supposed to be learning.”

Dr. Hadley, who completed her doctoral degree in child language at the University of Kansas, has developed a tool called the Tense Productivity Score, which measures the use of five different tense morphemes. Applying it to an existing data set from typically developing children, she and Dr. Matthew Rispoli demonstrated the strength of the tool in measuring growth, development, and individual differences. They are now working on a larger study, funded by the National Science Foundation, in which they are following 50 families with children who are 21 to 36 months old. They observe, record, and interact with the children in a play area that creates opportunities to measure the growth of grammar as well as to assess how language input supports a child’s development. Dr. Hadley hopes the work will lead to intervention strategies that help children with and without language learning problems have a richer language development experience.



## Shevon Harvey

Assistant Professor :: Department of Kinesiology and Community Health

Social, psychological, physical, and biological influences on health behavioral change among minority and aged communities

Under an umbrella program called “The BWELL Projects: Beautiful Women Engaging in Long-term Lifestyle changes,” Shevon Harvey investigates how minority women aged 40 and over promote healthy behaviors and manage chronic illness, focusing particularly on how social relationships encourage and support aging women in making behavior changes that lead to healthier lives. Dr. Harvey received her doctoral degree in behavioral and community health sciences from the University of Pittsburgh.

Based on secondary data analysis from the Americans’ Changing Lives database, Dr. Harvey identified that social relationships may influence women’s decisions to engage in physical activity. She works within small communities such as churches and senior centers to disseminate information about physical activity and chronic illness. “Working with a community, I can engage people in the research process,” she said. “I tell them they can use the information to change policies, build new programs, or improve existing programs, whatever is most helpful for them.”

As a Kellogg Community Health Scholar, Dr. Harvey worked with community women in East Side Detroit to provide access to hypertension and glucose screening, healthy eating, and physical activity through the Healthy Connections Project. With the help of these community health workers, the University of Michigan project screened more than 1,200 women, diagnosing hypertension in 75 percent and diabetes in 60 percent of the women.

Going into non-traditional communities often requires non-traditional approaches, Dr. Harvey says, which may mean meeting women in homes, churches, parks, and even hair salons at times outside the standard 8 a.m. to 5 p.m. Monday through Friday schedule. She is currently working with community centers in Champaign County to develop an intervention that promotes choosing healthy behaviors and managing chronic illnesses within the socioeconomic constraints of the women’s lives.

## Ken Wilund

Assistant Professor :: Department of Kinesiology and Community Health

The effects of exercise training and diet on muscle mass and function in patients with renal failure

Ken Wilund’s research focuses on issues related to cardiovascular disease, such as hypercholesterolemia, atherosclerosis, and the effects of exercise and dietary factors on inflammation, arterial calcification, cholesterol absorption, and microvascular function. He completed his Ph.D. in kinesiology at the University of Maryland.

Dr. Wilund recently initiated a series of studies to investigate the effects of exercise training and diet on co-morbidities in patients with chronic kidney disease (CKD), who have among the highest rates of death from cardiovascular disease. Because people with CKD don’t make enough vitamin D to absorb calcium from the diet, calcium is pulled from the bones and other tissues to maintain serum calcium levels. “This leads to a process known as vascular calcification, in which the smooth muscle cells that help regulate the size of blood vessels start to differentiate into bone-like cells,” Dr. Wilund said.

“Stiffening of the arteries happens to some extent with aging, but the process is greatly accelerated in CKD patients.”

With funding from the National Institutes of Health, Dr. Wilund is conducting a five-year study of 150 dialysis patients to assess the impact of protein supplementation and exercise on muscle mass and function, cardiovascular disease risk, and bone health. In a four-month pilot study, he found that stationary bicycling during dialysis led to improvements in several markers of cardiovascular disease risk, improved physical function, and promoted positive changes in mood, anxiety, and depression. Dialysis therapy also depletes amino acids in the blood, resulting in the loss of two to seven pounds of lean muscle mass each year. In his current study, Dr. Wilund is assessing whether whey protein supplementation alone and protein supplementation with endurance exercise training produces lasting benefits.

## Laura Payne

Associate Professor :: Department of Recreation, Sport and Tourism

The effects of leisure behavior on measures of health and well-being (e.g., psychosocial, physiological) among adolescents and older adults

For more than 20 years, Laura Payne has watched her brother manage ankylosing spondylitis, a chronic condition that causes inflammatory arthritis of the spine and joints. She was so inspired by his courage that she wrote her doctoral dissertation at The Pennsylvania State University on arthritis, health, and leisure.

The prevalence of chronic conditions, particularly within the aging population, motivated Dr. Payne to focus her research in this area. She is a principal investigator in Live Well Be Well, a chronic disease self-management program that is a collaborative effort of University of Illinois Extension, University of Illinois-Chicago Center for Research on Health and Aging, Illinois State Departments of Aging and Public Health, and various community-based aging, social service, and health organizations.

The evidence-based program for adults with one or more chronic conditions, living primarily in underserved urban and rural areas, offers participants a

seven-week series of interactive classes in which they learn about such issues as managing symptoms, fitness and exercise, and dealing with depression, which often accompanies chronic illness. “People feel hopeless, helpless, isolated, and ashamed,” Dr. Payne said. “Live Well Be Well shows them they’re not alone, and helps them develop realistic action plans for managing their conditions.”

Program participants have reported making such lifestyle changes as improved nutrition and increased physical activity, which resulted for many in decreasing the amount or number of medications they take. Qualitative data also indicates that the program is effective in providing emotional and informational support to participants, thereby improving their ability to manage their conditions. In 2010, efforts focused on disseminating the program more widely within Illinois. In 2011, Dr. Payne said, program leaders will concentrate on connecting more effectively with Spanish-speaking populations.



Megan Malone

## EXPANDING HORIZONS

Valerie Kramer volunteered with a physical therapist in Ecuador. Megan Malone and Graceann Schmitt gained confidence and enhanced problem-solving skills while taking classes at Queensland University in Brisbane, Australia. Rebecca Kirkpatrick joined a professional organization to help her prepare for a career in tourism management.

Each of these experiences was made possible, in part, by support from the College of Applied Health Sciences' Career Development and Leadership Awards (CDLA). In 2010, nearly two-dozen AHS students joined the ranks of those who've applied CDLA funds toward enriching their educations by studying abroad, joining professional associations, attending conferences, and engaging in research. Funding for Career Development and Leadership Awards comes from the AHS Annual Fund, donations that come in each year from generous friends and alumni of the College.

### To the land down under

Sport management major Megan Malone took classes in event operations management, festivals and special events, physical activity and health promotions, and Australia's marine environment when she studied abroad at the University of Queensland in Brisbane. She traveled the continent extensively and immersed herself in its culture, taking field trips to a koala sanctuary and the Moreton Bay Research Station, and learning about new sports such as rowing, rugby, netball, cricket, and surfing. In addition to expanding her world view, she says she acquired and sharpened skills that will serve her well in her chosen career field, sports marketing.

## “My experiences abroad also will help me adapt to unfamiliar environments and patient populations.”

Kinesiology major and future occupational therapist Graceann Schmitt also spent a semester at Queensland University, where she applied her CDLA funds toward the cost of transportation to a volunteer position at Australia’s largest private hospital, Greenslopes, where she worked with many different departments and functions.

“I was amazed at how much involvement they allowed student volunteers to have,” she said. “I learned a great deal about the healthcare system in Australia by working alongside a great staff of people.”

### Gaining Professional Skills

Fellow kinesiology major Valerie Kramer, who plans to become a physical therapist, augmented her studies at Ecuador’s Universidad San Francisco de Quito by volunteering with physical therapist Marlene Chimbo. She says the experience enhanced her cultural sensitivity as well as her ability to communicate with patients in

Spanish, both of which will serve her well in her own career as a physical therapist.

“I plan to work with populations that are underserved,” said Kramer, who is currently a research assistant on a study of physical activity among older Latinas. “My experiences abroad also will help me adapt to unfamiliar environments and patient populations.”

To sharpen her skills for a career within convention and visitors’ bureaus, tourism management major Rebecca Kirkpatrick used her CDLA funds to join Meeting Planners International. She says she has benefited greatly from involvement in the organization’s Membership Committee and from its publication and webinars, which offer useful “how to” information about networking, writing effective requests for proposals (RFPs) for outside suppliers, and dealing effectively with the challenging economic climate.



### Thank you!



The enterprising students who apply for CDLA funding each semester never fail to express their gratitude that the program exists. Megan Malone summed up the feeling when she said, “With the help of a Career Development and Leadership Award, I had a life-changing study abroad experience in Australia. I’m so thankful for AHS friends and alumni who donate to the annual fund. I’m very fortunate to be part of such a wonderful college that values education not only in the classroom, but around the world.”

With the ongoing support of friends and alumni, AHS will continue to lend a hand to students who are looking to stretch themselves beyond the parameters of their prescribed degree programs.

# ↘ HOMECOMING 2010



1



2



4



3

In 2010, the University of Illinois celebrated the 100th anniversary of its first Homecoming in 1910, the longest continually held college Homecoming event. The College of Applied Health Sciences joined in the festivities with an outstanding weekend of activities. Enjoy the gallery of photos.

**1.** AHS Distinguished Alumni Award recipient Dr. Frank Hayden attended the tent party with his family. Dr. Hayden's research on children with intellectual disabilities in the early 1960s led to the creation of Special Olympics.

**4.** The gloomy skies didn't dampen the spirits of those attending the AHS tent party, including Joan Camardo, a 1943 graduate of the speech program who was mentored by Dr. Severina Nelson.

**6.** AHS Distinguished Alumni Award recipient Dr. Hitoshi Nishino established and was head of Tokai University's Department of Sport and Leisure Management, the first department to use the word "leisure" in Japan.

**2.** The tent party would not have been as successful without the invaluable help of AHS students, who did everything from set up tables to register guests.

**5.** Dr. Laura Kann said that the University of Illinois taught her that there was absolutely nothing she could not do. Dr. Kann is chief of the Surveillance and Evaluation Research Branch in the Centers for Disease Control and Prevention's Division of Adolescent and School Health.

**7.** Tom Brown is the recipient of the Harold Scharper Humanitarian Award. Mr. Brown is the co-founder and director of the National Veterans Wheelchair Games.



**8.** Carl Suter is the recipient of the Harold Scharper Achievement Award given by the Division of Disability Resources and Educational Services and Delta Sigma Omicron. Mr. Suter is the former chief executive officer of the Council of State Administrators of Vocational Rehabilitation.

**9.** Homecoming weekend began with the dedication of Timothy J. Nugent Hall, the new home of the Beckwith Program for students with severe physical disabilities. Dignitaries including University of Illinois President Michael Hogan, former colleagues, friends, and family gathered on October 22 to honor the man who established the University's leadership in disability services. In this photo, Dr. Nugent, at left, poses with his former assistant in the Division of Disability Resources and Educational Services (DRES), Joseph Konitzki, and current DRES Director Brad Hedrick.

**10.** After the luncheon, Dean Tanya Gallagher cut the ribbon at the dedication of the newly renovated and updated Audiology Lab in the Department of Speech and Hearing Science. Standing to her left in the green jacket is Dr. Adrienne Perlman, head of the department, and at her far left is Dr. Donald Schum, AHS Distinguished Alumni Award recipient and Vice President of Audiology and Professional Relations at Oticon, Inc.



## LEARNING BY DOING

What better way to acquire skills related to a particular task than to complete the task? What better way to make choices among career options than to experience the range of possible opportunities and audiences?

In its 2006-2010 strategic plan, the College of Applied Health Sciences made preparing students for leadership one of its top priorities. One of the ways in which degree programs in the College accomplish this is through required internship and clinical experiences. All three instructional units also offer classes that send students into the local community to learn while providing a valuable service to nonprofit agencies, health care facilities, schools, and more.


### **Developing greater awareness**

Kiara Perkins intends to become a speech-language pathologist after completing her undergraduate degree in the Department of Speech and Hearing Science. As a student in SHS 375 Community Partners and Health, Perkins worked with 18- to 24-month-old children of low-income families at the Bradley Learning Center. She helped to promote the development of literacy skills through shared reading, created other skill-building activities, and wrote progress reports for her young charges. Perkins described her time at the Center as one of the most valuable experiences she's had as a student.

"As a speech-language pathologist, I want to work with children from lower socio-economic groups, and my experience at the Bradley Learning Center gave me a valuable perspective on the services that are available to these families," she said.

Patricia Cetin, a clinical faculty member in SHS and course instructor, said many students report greater awareness of issues related to access to services as a result of their experiences in the community. They also develop a deeper understanding of the meaning of human communication.

"Before students get into their more clinical courses, they become familiar with the needs of people who have difficulty communicating," she said. "They get a sense of variations in communication styles, and start to understand how they can adjust their own communication style to connect with the people they're serving."



In addition to early childhood education centers, students in Community Partners and Health have volunteered in nursing homes, rehabilitation units, public schools, and after-school programs. They write reflection papers throughout the semester to connect their classroom learning with their community-based experiences, and produce a final project that they leave with their volunteer site. Kiara Perkins, for example, created two sets of cards to assist children at the learning center in practicing numbers and colors.

### Experimenting and reflecting

In the Department of Kinesiology and Community Health, Professors Kim Graber and Wojtek Chodzko-Zajko collaborated on creating a course that uses public service to educate students about different components of wellness, including physical, social, environmental, spiritual, psychological, and intellectual. The result is the course Civic Engagement in Wellness, which is cross-listed within all departments in Applied Health Sciences.

“In a genuine setting, students are able to experiment and unlock their own findings instead of relying solely on the wisdom and experiences of their instructor,” Graber said. “Experiential learning also contains at its core the notion that reflection is an essential element of education.”

Students in the class develop a project that is relevant to the needs of the organization with which they are working, which may include hospitals, assisted living communities, adult day centers, park districts, and nursing homes. After successfully implementing and expanding the course within the College of Applied Health Sciences, Graber and Chodzko-Zajko developed a toolkit for faculty throughout the University of Illinois who may be interested in implementing a similar course and conducted a series of informational workshops. They hope eventually to market the toolkit not only to colleges and universities throughout the United States, but also to high schools.

### Hard work pays off

LoriKay Paden, an instructor in the Department of Recreation, Sport and Tourism, tells students on the first day of RST 300 Programming for Recreation, Sport and Tourism, “Everything you’ve heard about this class is true. It is time-consuming and challenging, but one of the most rewarding experiences you will have on campus.” So far, the 50 to 60 students who take the class each semester have agreed. They work in teams with community agencies to plan an event that is relevant to the organization’s audience and needs. Last year, more than 1,500 community members participated in these events, for which the students are solely responsible for the development, budgeting and fundraising, marketing, implementation, and evaluation.

Tourism management student Kaylan Wonser and her team planned and executed the First All-American Talent Show in a local middle school. “As a group, we learned

how to communicate as a team and use all of our individual talents,” she said. “I was able to practice professional business skills working with local businesses to support and market our show. The project allowed us to build the confidence and creativity that are essential to our field.”

Another group of students planned a “chili cook-off” event for a church in the area. After a lot of hard work and worry, the students were gratified to see participation in the event exceed their expectations. Team member Justin Neally, a sport management major, said seeing the hard work pay off was “a truly special feeling, but even better was seeing the smiling faces of a proud community.” For his teammate, recreation and park management major Laura Briggs, the event not only educated her about the “behind the scenes” work of special events, but also proved to her that “there is a need for professionals who specialize in designing and implementing leisure services.”

### Mutually beneficial

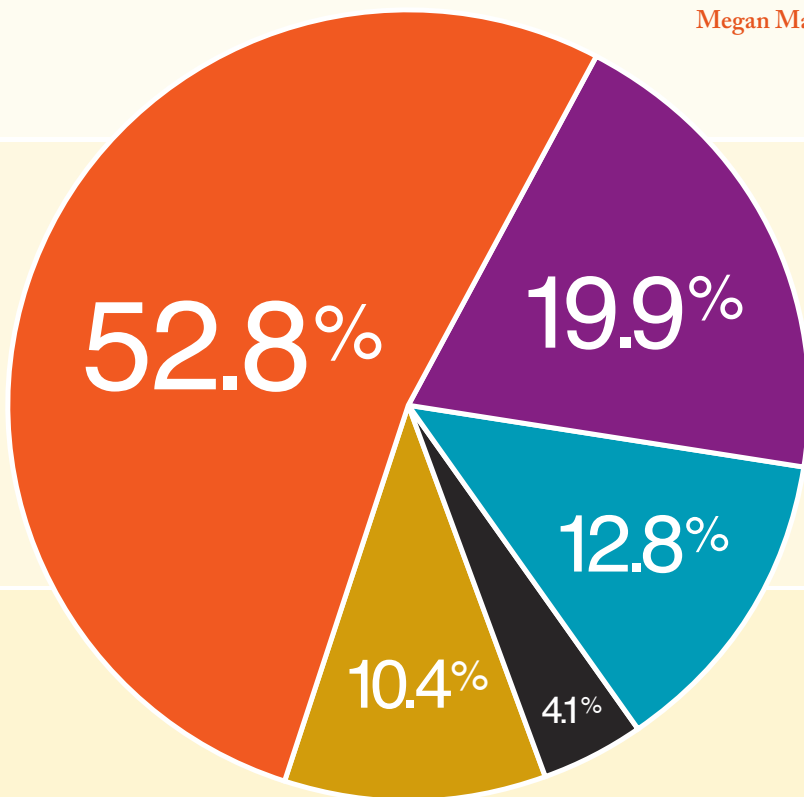
These few examples of the way the College of Applied Health Sciences brings the real world into the classroom demonstrate the benefits derived by our students and the community members whom they serve. In many cases, our students are helping to reach clients that are traditionally underserved. Their efforts improve the quality of life for people across the lifespan, and help to bring communities together. In return, our students take away a unique set of skills and knowledge that can only be gained through a “learning by doing” model.

## Brilliant Futures Campaign Update

With the generous support of alumni, friends, and other valued partners, the College of Applied Health Sciences is 98.8% towards its \$20 million Brilliant Futures Campaign goal. The source of these gifts is shown on the chart.

**“I am so thankful for friends and alumni who support the College of Applied Health Sciences. You helped to fund some of my life-changing study abroad experiences in Australia. I am very fortunate to be part of such a wonderful school that values education not only in the classroom, but also around the world.”**

Megan Malone, senior, Department of Recreation, Sport and Tourism



ALUMNI & FRIENDS	\$10,434,696
FOUNDATIONS	\$3,941,058
FAMILY FOUNDATIONS	\$2,522,600
CORPORATIONS	\$803,197
OTHER ORGANIZATIONS	\$2,061,692

**We are so close, but we are not there yet!**

If you have not been part of the Brilliant Futures Campaign, you still have time. All gifts, large and small, are counted and it will make an incredibly powerful statement about the value you place on our mission.

Contact the College of Applied Health Sciences Office of Advancement at 217-244-6600 for more information. Together, we can ensure that all of our students have life-changing educational opportunities like Megan.

**↗ Campaign Goal: \$20,000,000**  
**(July 1, 2003 – December 31, 2011)**  
**Gifts received as of December 31, 2010 = \$19,763,243**





# THANK YOU

As I meet with friends and alumni of the College of Applied Health Sciences, one of the most common questions I'm asked is, "Will my donation really make a difference?" Whether the donation is \$25 or \$25,000, I can always answer with a resounding, "Yes!" Both current and deferred gifts help the College in many ways.

First, annual giving and contributions to named funds allow us to recognize and reward excellence and initiative among our students and faculty. For example, Kinesiology senior Jordan Sestak was among the recipients of Career Development and Leadership Awards in 2010. Jordan applied her award toward a trip with Global Medical Brigades to Honduras, the second poorest country in the western hemisphere. She took vital signs, handed out medications, screened patients for infections, and educated them about hygiene and health care. Jordan not only gained invaluable experience for her future career in medicine, she provided an invaluable service to people who rarely see doctors. Our donors made this possible.

For the first time last spring, we presented the Phyllis Hill Award for Exemplary Mentoring in the Edmund J. James Scholar Program to Professor Steve Broglio. His nominator, 2010 graduate Tyler Surma, described his work with Dr. Broglio as an "irreplaceable" learning opportunity. For Dr. Broglio, the award reinforced his commitment to providing our undergraduate students with meaningful research experiences. Our donors made this possible.

Without our donors, we would not be able to offer scholarships and awards to our undergraduate students and fellowships to our graduate students, financial aid that enables students to spend more of their time on academic and professional development. Donors also make possible endowed professorships, which help us to recruit and retain top scholars in the applied health sciences.

Your donations also help us to maintain and enhance our instructional and research facilities. Nowhere is this more evident than in the north addition to Huff Hall, which will be the center of interdisciplinary research, education, and outreach when it is completed. We are so pleased to have generous supporters who are pursuing naming opportunities within the Center on Health, Aging, and Disability and within the Master of Public Health suite. The North Addition is one of the college's most significant facility expansions in recent decades and is a true testament to those who so passionately believe in the relevance of our work.

In short, all the donations we receive—no matter the amount or whether outright or deferred—are critical to our success as a College. They are critical to the success of our faculty and our students, and to the excellence of their experiences here. And here's more good news: every gift and pledge we receive between now and the end of 2011 counts toward our fundraising goal for the Brilliant Futures Campaign! If you have not already done so, we hope this will be the year you choose to join our community of supporters. You do make a difference, for which we thank you so much!

**Sara Kelley**  
Assistant Dean and Director  
AHS Office of Advancement

# DONORS

Private gifts play a critical role in our ability to enhance teaching, research, and outreach programs within the college that impact not only our students but also the health and wellness of our society. We are pleased to recognize those who have contributed to our progress during the fiscal year ending June 30, 2010. Chancellor's Circle (CC) members are identified, including the level of the membership level achieved July 1, 2009, through June 30, 2010. An asterisk identifies new Presidents Council Members during this fiscal year.

Although every effort is made to ensure accuracy, errors may occur. If we have omitted your name or listed your name incorrectly, please contact the Office of Advancement, College of Applied Health Sciences, 1206 South Fourth Street, Champaign, IL 61820; telephone (217) 244-6600.

## PRESIDENTS COUNCIL MEMBERS

The College of Applied Health Sciences recognizes members of the University of Illinois Foundation Presidents Council for their commitment to strengthening the University's excellence. We are truly grateful to the following Presidents Council members who have provided significant lifetime contributions to the University and the College of Applied Health Sciences through gifts of endowment and to those who supported the college July 1, 2009-June 30, 2010 with a gift of \$100 or more:

### The Laureate Circle

Members who have subscribed one million dollars or more

William A. Chittenden II and Carol L. Chittenden  
Nadine C. Houston  
Mannie L. and Cathy Jackson  
Shahid R. and Ann Carlson Khan (CC Platinum)  
Kim C. and Michelle Pollock

### The Pentad Circle

Members who have subscribed five hundred thousand dollars or more  
James K. and Karen S. McKechnie (CC Gold)  
Robert E. and Kay E. Merrick (CC Platinum)  
James E. and Erin E. Ross  
Ruth L. Sandall  
Richard F. Schweig (CC Silver)  
Nancy C. Spinner  
Charles G. and Kay E. Stenberg

### The Centuria Circle

Members who have subscribed one hundred thousand dollars or more  
Edward W. Collins and Doris Strickland-Collins (CC Platinum)  
Carmine Corsetti (CC Platinum)  
Daniel G. Dropko  
Merlyn G. Earnest (CC Silver)  
Morris L. Hecker Jr. (CC Platinum)  
Pat Hutson  
Jerene C. Keller  
Leon C. Keller  
Lynda L. Koopman  
Dan and Connie Newport  
Adeline "Jo" Puccini  
Judith A. Schaffenacker  
Jan S. Viste

### The Consular Circle

Members who have subscribed fifty thousand dollars or more  
J. Theodore Arenberg Jr. and Jean E. Arenberg  
Carolyn J. Bilger (CC Silver)  
John W. and Judith Hilger Comerio  
Toby J. Deutsch (CC Gold)  
Jean L. Driscoll  
Joan Good Erickson  
Nicholas and Sally Peterson Falzone  
Julia B. Faust  
George F. Hartung  
Robert T. (deceased) and Marjory J. Kaloupek  
Martin Koeck III and Doris L. Koeck (CC Bronze)  
Rainer and Julie S. Martens (CC Bronze)  
Marcia Spaeth McDermott (deceased)  
Timothy J. and Jeanette S. Nugent (CC Gold)  
Elaine Pagel Paden (CC Gold)

Carolyn C. and Joseph W. Phebus (CC Silver)  
Keith R. and Karen H. Phelps  
Sarah C. Mangelsdorf and Karl S. Rosengren  
Robert H. Shultz Jr. and Cathleen Mills Shultz (CC Silver)  
Jeanne S. and Charles Snyder  
William E. and Margerite D. Stallman (CC Silver)  
Ann Schneider and William C. Walters  
David R. and Susan D. Weigandt  
Raymon F. and Linda Ayers Whitney (CC Bronze)

### The Membership Circle

Members who have subscribed twenty-five thousand dollars or more  
Sybil Smiley and Benedict J. Adelson  
Joseph J. and Ann C. Bannon  
\* Ron K. and Leisa A. Barger (CC Gold)  
Charles R. and Dianne B. Berthold  
Stanley E. Birstein  
David L. and Kimberly Bobert  
Raymond F. and Ann B. Borelli  
Frederick S. Brightbill  
Jerry D. and Phyllis J. Burnam (CC Bronze)  
Susan J. Chaplinsky  
Judith A. Checker  
Alyce Taylor Cheska  
Betty J. Van Doren Coughlin  
L. Karen Darnier  
Joseph W. and Jeannette Therault Devall  
Ronald H. and Barbara A. Dodd  
James A. and Yvonne L. Dyer  
Charles M. Elander (CC Bronze)  
Robert D. and Mary Ann Espeseth (CC Bronze)  
Sonita Blackaby and Ronald D. Gaitros  
Richard L. and Stephanie Bowers Gianacacos (CC Gold)  
Tanya M. Gallagher and Kenneth L. Watkin  
Richard D. and Teresa H. Grodsky  
Robin R. and Barbara Danley Hall (CC Bronze)  
Ryan J. and Breanne M. Harms  
\* Glenn P. Hebert (CC Silver) and \* Marilyn A. Cooper  
Joseph Allen Hemphill  
Robin Neal and J. Christopher Kaler  
Douglas M. Karlen  
Keith W. and Sara Sims Kelley  
John A. Konya  
L. Bert Leach (CC Silver)  
Judith A. LeDuc  
Steven J. and Ronna B. Leibach  
Robert H. and Carol F. Lenz  
Jeffrey I. and Lisa Livovich  
Fred and Cynthia E. Lukasik  
Floydetta M. McAfee  
George A. and Kathleen D. McConaghy  
William R. McKinney  
Robert C. and Gwendolyn E. Mitchell  
Saul J. Morse and Anne B. Morgan  
\* David S. Mundy (CC Gold)  
Robert E. Mundy II and Mary S. Mundy  
Michael S. and Sally L. Pope  
Linda Obenauf and H. William Porterfield  
Ann Bulmash Selin and Richard A. Selin  
Robert L. and Bonnie L. Sprague  
William T. and Terri Sturtevant (CC Bronze)  
Mary Ann and David E. Tungate  
John C. and Judith Desch Turner (CC Silver)  
E. Eugene and Janann D. Vance  
Gene N. and Marjorie M. Venegoni  
Agnes Radich Vidovic  
John B. and Ruth E. Weaver (CC Bronze)  
Janie G. and Ehud Yairi

## DEAN'S CLUB

The following individuals are recognized as members of the Applied Health Sciences' Dean's Club with gifts of \$100 to \$1000+ July 1, 2009-June 30, 2010.

### Gold Chapter

\$1,000 or more  
Jean M. Anthony  
Michael L. and Harrilyn M. Beehner (CC Bronze)  
Sandra M. and Richard A. Boileau  
Barbara J. Calabrese  
Mary Ann Carmack and Rodney L. Derbyshire (CC Bronze)  
Ann E. Cody  
Dean C. and Kathleen Garstecki (CC Gold)  
Laurie A. Geeseman  
John H. and Claudia B. Holliman  
Walter C. Johnson Jr.  
Matthew K. Kallappa  
Bengt I. and Kathryn A. Karlsson (CC Bronze)  
Elsie Ann Kostka  
Arabella D. Massey  
James E. Misner Jr. and Marilyn S. Misner (CC Gold)  
Martin J. Moore  
Karen L. Osborne  
Michael M. and Patricia A. Pence  
William F. Riner Jr. and Mary Riner  
John R. Seffrin (CC Bronze)  
James R. Sharp  
Gary J. and Esther B. Garret Solar  
Michael E. Vitoux  
Harold P. Wimmer  
Donald J. and Judith A. Wirth  
JoAnn E. Ziebarth

### Silver Chapter

\$500-\$999  
Richard F. and Sally N. Afable  
Rhoda L. Agin  
Martha A. Aly  
Joyce E. Ballard  
Rita N. Buczyrna  
Joy C. Bunt  
Mary Jo Florio Garrison  
David Geeseman  
Katherine Geeseman  
Frances L. Johnson  
Phyllis Ann Jones  
Robert A. and Helen H. Kasper  
Thomas L. and Elouise C. Koenig  
Martin Kramer  
Shauna S. Larsen  
Victor D. Little  
Helen M. and Donald M. McMahon  
Carrie L. and Jeffrey S. Morris  
Martin I. and Karen A. Iehl-Morse  
Dennis C. Odelius  
Jean L. Perry  
J. Robert and Linda L. Rossman  
John M. Schmid  
Randy L. and Debbie K. Smith  
Sandra A. Stelmach  
Ronald G. and Patricia Stopka  
Marta Van Loan  
Jan A. Verhage  
Jeff A. and Diana L. Zimmerman

**Bronze Chapter**

\$100-\$499

Mary R. Abbott  
Paul R. Ahrens  
Gary R. and Barbara L. Allie  
Edgar S. and Donna Rae Alsene  
Peg Amram  
Marc J. Anderson  
Patti W. Anderson  
William L. and Jane C. Anderson  
Robert Arnold  
Antoinette T. Ave  
M. Jane Ayer  
Jean A. Bagel  
Anne H. Bages  
Jean B. Baker  
Francine M. Balk  
Art and Susan M. Bane  
Allen M. and Marsha S. Barnett  
Barbara A. Baum  
Helen M. Bayer  
Tracy Baynard  
David A. Bedworth  
Bob and Carol J. Behnke  
Gerald W. and Barbara S. Bell  
Glen L. and Sylvia D. Bellows  
Michael G. and Debra Bemben  
Linda and Thomas Benedick  
Roberta S. Bennett  
Sue A. Bergstrom  
Richard C. Berry  
Joan C. Bertrand  
Susanne Bhanos  
Marianne V. Bieker  
Scott T. Block  
Steven and Melba P. Block  
Nadine T. Bobit  
Ted and Carol Merriam Bockman  
Sheryl Bogolub  
Kent B. Borecky  
Lisa A. Borho  
Willard M. and Helen R. Boris  
William E. and Naomi J. Bousman  
Patricia A. Bowen  
C. Alvin Bowman  
Nanine S. Breon  
Matthew E. Buchi  
Jeffrey E. and Catherine A. Burgard  
Theresa C. Burgard  
William G. Burwell  
Pamela C. Butler  
Rodney A. Cardinal  
Barney R. and Michele L. Cargile  
Janet W. Carson  
Michael A. Ceddia  
Ella M. and Ian C. Chafee  
Courtney L. and Deborah L. Chapman  
Wojtek Chodzko-Zajko and Andriara Schwingel  
Winfield S. Clark  
Kenneth S. Clarke  
Jody L. Clasey  
Charlene A. Coady  
Florence L. Cohen  
Charles B. Corbin  
Patrick W. Cottini  
Tamara Craddock  
Nancy L. Crase  
Brian J. Crawford  
Jean M. Creswell (deceased)  
Deborah Ann Crown  
Honorable Byron G. and Christine A. Cudmore  
Robert L. Cumpstone  
Kirk J. Cureton  
Theresa E. Cusick  
Carol A. Czapar  
Glenna M. Dagley  
Adrienne E. Dahncke  
Cathy N. and Whitson L. Daily  
Karen A. Dannenhauer  
Alan Norton Davidson and Sharilyn Y. Schaffer Davidson  
Barbara M. Deeming  
Richard L. De Schriver  
Carole A. DeWilkins  
Patricia A. Dillon  
Guy R. Dirkin  
Bradley J. Doty  
Richard W. and Ingrid D. Dubberke  
Jo W. Duchene  
Don E. Dulany Jr.  
Marjorie L. Dunlap  
Beverly A. Dunn  
Peter S. Duran and Beverly J. Reid  
Craig P. Eddy  
Paula J. Edick

Alan L. and Barbara L. Efflandt  
Brian L. Estes  
Ellen M. Evans  
Paul S. Fardy  
Paul M. and Alison M. Farrelly  
Elizabeth M. Faulks  
Ron Ferguson  
Jane M. Fernandez  
John S. Fine (deceased)  
Gary M. and Edith L. Fink  
Elsa M. Fischer  
Darlene J. Fisher  
Pamela S. Ford  
Shelley M. Forrest  
John J. and Jane C. Francis  
Judith Ann Franzen  
Michael L. Freedman and Kathryn A. Leonard  
Harold J. Frey  
Gary L. Friestad  
Lawrence W. and Linda J. Gahan  
Jessica M. Galli  
Philip C. and Betsy L. Galli  
Kathleen A. Ganey  
Dorothy E. Gemberling  
Berenice Gherardini  
Geraldyn and Thomas A. Giunta  
M. Turk Glazebrook  
Renee Goier  
Michael B. and Jinny Goldstein  
W. Gregg Goodman  
Carla Gordon  
Nancy K. Gore  
Daniel R. and Deb Lee Gould  
Ryan K. and Tracey Gower  
Matthew and Sandy Grassi  
Gary J. Gray  
Robert Knight Gray (CC Bronze)  
Russell O. Graybeal  
Nancy A. Greenlee  
Joseph A. and Ellen M. Gugliotta  
Jon R. Gunderson  
Qinghui Guo  
Roger H. Guthrie  
Arthur Robert and Mariann E. Gutshall  
Paul F. and Elaine E. Guttman  
Eric Edwin and Katherine Shepherd Hall  
Takeshi Harada  
Heidi M. Harbers  
Donald R. Hardin  
Andrea Lovaas Havenar  
Laurie Alban Havens  
Kathleen M. Haywood  
Jean L. Heath  
Gary D. and Frances M. Heien  
Doris E. Henderson  
Vivian H. Heyward  
Charles H. and Lisa M. W. Hillman  
Emil G. Hirsch  
Michael Hoadley  
Barbara Williams Hodson  
Susan Holden  
Wataru Horie  
Patricia House  
Robert W. Hull  
Janet C. Hunter  
Kevin N. Jarboe  
Jiann-Min Jeng  
Beverly D. Johnson  
Mary E. Jones  
Harrell T. Jordan II and Linda F. Jordan  
Paul S. Kadota  
Kyle M. and Alicia Lopez-Kalinich  
Jill A. Kanaley  
Garry R. and Tamara J. Katz  
Joseph P. Keck Jr. and Barb Keck  
Ralph Keck  
Edwin E. Kehe  
Susan E. Keim  
Kevin J. and Margaret M. Kell  
Todd C. and Erin Bavougian Kelley  
Donald E. Kenney  
Edwin J. Kerouac  
Laura S. Kiedaisch  
Eugene W. Kiesel (CC Bronze)  
Vivian A. King  
Thomas F. Kinsella  
Sandy W. Klitzing  
John S. and Kathryn J. Knoblett  
Richard W. and Julia A. Kommers  
Kathryn A. Koshansky  
John J. Koslowski  
Judith L. and Richard L. Kreiter  
Ingrid C. Kupprat  
Barbara J. LaBaw  
Lawrence K. and Kristi A. Labiak

Diane T. Lange  
Heidi J. Lapin  
Leanne R. Larson  
Kenneth D. Lawson  
Edward J. Layden Sr. and Eileen G. Layden  
Charles H. and Kathleen T. Leighton  
George P. Levandoski  
Judith L. Lieberman  
John Lowe III and Sherylee K. Lowe  
Lu Ann Walker Maddox  
Robert J. and Rebecca Secarea Maganuco  
John H. Magnus  
Lucille I. Magnusson  
Patrick W. Maher  
Patrick E. Mahoney  
J. David and Susan E. Malcom  
Virgil L. and Linda Joyce Malmberg  
Daisy C. Marshall  
Maureen G. Marx  
Lawrence E. Maus  
Donald M. May  
Etta L. McAfee  
Jean A. McCay  
Maxine S. McGinnis  
Barry C. McKeown  
H. Keith and Susan L. McVicker  
Joshua E. Meadow  
Sylvia A. Meek  
Donna and Bernard Melanson  
Shawn A. Meredith and Teresa M. Baker  
Alan and Kathleen H. Metcalf  
Ruth K. Mieber  
Pamela Ayres Milchrist  
Jeffrey R. Miller  
Philip N. and Holly K. Mirell  
Jan Allison Moore  
Susan E. Moore  
Vance P. and Sharon R. Morrison  
Michael G. and Patricia A. Mueth  
Cheryl A. Mulholland  
Monica A. Munaretto  
John J. Murray  
Roberta K. and James E. Murray  
Steven B. Nasatir  
Gary S. Neiman  
Heidi Romans Nelson  
Robert J. and Sarah Barnett Nemeth  
Clifford L. and Jean C. Netherton  
James E. Nicely  
Virginia Nobles  
Lola L. Nosker  
Michelle L. Ochs  
Laura R. Oftedahl  
Andrew H. Olbur  
J. Michael O'Mara (deceased)  
Gary A. and Ellen K. O'Neill  
John J. O'Neill  
Betty Orlando  
Judith A. Pachciarz  
Parviz Parhami  
Angelo Pascale  
Richard S. Pawlow  
Merle F. Peden Jr. and Eleanor A. Peden  
Jose G. and Yolanda Vazquez Pedroza  
Nathan J. and Gretchen L. Pendell  
Susan K. Pensinger  
Roy J. and Wilma J. Pesavento  
Victor Petreshene  
Joseph J. Petrosino  
Myrna A. Pfaffinger  
Ronald Lee Phelps  
Jorgen C. Phillips  
Paul (deceased) and Edyth L. Plotkin  
Sharon Ann Plowman  
Anka G. Popovic-Krstic  
Tony and Christina A. Porterfield  
Leonore B. Potter  
Eileen Pratt  
Dale A. Prochaska  
Edwin W. Radlinski and Ronna F. Lodato  
Alejandro A. and Dawn F. Rangel  
Roger A. and Deborah J. Reeves  
Rick J. Rhodes  
Kyle G. Richardson  
Alberta L. Richetelle  
Jill B. Richey  
Connie W. Rieken  
Gerald R. and Diane L. Rightmyer  
Hugh and Judith Rightmyer  
Joseph A. and Melanie J. Rightmyer  
Vera Rimnac  
Stanford A. and Bonnie S. Robbin  
James William Rogers Jr. and Lisa Marie Rogers  
Steven W. and Marilyn B. Rogers  
Diane E. and John D. Rotramel

Kerry Rowand  
 Benjamin L. and Jennifer L. Ruddell  
 Mary F. Ryan  
 Donald G. Sammons  
 Douglas M. Sasso  
 Tara K. Scanlan  
 Robert M. Schaeffer  
 Sara D. Schauwecker  
 Bruce E. Schnittman  
 William M. Schuyler Jr.  
 John C. and Carolyn Yashko Schwebel  
 Betty Scott  
 Charles O. Sheridan  
 Debra A. Shilts  
 Shirley P. Shive  
 Jeffrey A. Shuck  
 Becca and Brad Simenz  
 David Simenz  
 Mark J. and Deborah A. Simmons  
 Robert G. Sjostrom  
 Becky J. Smith  
 Darryl L. Smith  
 James J. and Mary M. Smith  
 Jewel E. Smith  
 Mayme V. Smith  
 Jean C. Snuggs  
 Paul D. and Sheila E. Sones  
 Lee C. Spector and Adrienne L. Perlman  
 Robert J. Stasiak  
 Martha B. Stewart  
 William P. Stewart  
 Timothy A. Strathman  
 Ginny L. Studer  
 George B. Stupp Jr.  
 Joan K. Sunseri  
 Carl A. and Susan E. Suter (CC Bronze)  
 Laurence E. and Marlene J. Svab  
 Carol V. Swanson  
 Geraldine Swift  
 Theresa M. and Terry P. Swift  
 Wayne A. and Patricia A. Tasic  
 James N. Taylor  
 Don L. Thompson  
 Charles N. Timbie  
 Eastman Y. and Juliet Villanueva Tiu  
 John H. Tocks  
 Phyllis G. Tresselt  
 Josh M. Trout  
 Dora E. Vandine  
 George F. Veenstra  
 Dorothy M. Vick  
 Dorothy E. Vitter  
 Francis Michael Wagner  
 Kevin J. and Colleen F. Walker  
 Stephen A. Walker  
 Laura Gallagher Watkin  
 Howard E. Weaver  
 Mark W. and Deidra Weidinger  
 Elizabeth Rae Weiss  
 Lorryne H. Weiss  
 Mary L. Weller  
 Raymond L. and Kathleen Welsh  
 Robert L. and Elizabeth Forsyth-Whalen  
 Richard A. and Dianne L. Wham  
 Irene E. White  
 Philip L. White  
 Mary J. Whitman  
 Gary R. and Peggy Gates-Wieneke  
 Reo L. and Mai Wilhour  
 Jonathan L. Wilkin  
 Dee Willden  
 Daniel J. Wolf Jr.  
 Robert E. and Julia Wolf  
 James W. and Rosella Wood  
 Shirley Jean Wood (CC Silver)  
 Jeanne A. Woodring  
 Robert S. Youngberg (deceased)  
 Earle F. Zeigler

### Olympians

The following individuals are recognized as Olympians and contributed \$1-\$99 to the College of Applied Health Sciences July 1, 2009-June 30, 2010:

C. Jean Aberle  
 Thomas D. Abernathy  
 Joshua J. Ackert  
 Lloyd W. and Lela Carolyn Ackland  
 Carolyn Alice Adams  
 Joan M. Adams  
 Warren Richard Adams Jr.  
 John B. and Virginia L. Albert  
 Rona Alexander  
 Karen M. Allabastro

Janet H. Allaire  
 Harvey and Mindy Alperin  
 Nicoline G. Ambrose  
 Casey H. Anderson  
 Denise M. Anderson  
 George R. Anderson Jr.  
 Judith R. Anderson  
 Steven W. Anderson  
 Flavia C. Andrade  
 Robin E. Arbieter  
 Russell R. Attis  
 Lloyd A. Atwell  
 Robert and Trenna W. Aukerman  
 John P. Avallone  
 Sherri S. Bailin  
 Bonnie L. Bair  
 Daniel J. Baker  
 Jo Anne L. Baker  
 Keith W. Bakken  
 Melody A. Baldi  
 Charles G. Baldwin  
 Cheryl K. Baldwin  
 Roberta K. Bandes  
 Emily A. Barnes  
 Susan D. Barnett  
 R. J. Barth  
 Mary Ellen Battoe  
 Nancy M. Bazzetta  
 Carolyn J. Bechly  
 Steven Benesh  
 Lois Kathryn Bennis  
 James R. Benson  
 Kemp L. Berbaum  
 Mary Frances Berger  
 Terri J. Bergmann  
 Joann Berry  
 Suzanne L. Bicek  
 Stephen S. Biddle  
 Timothy F. Biedermann  
 Denise L. Bierie  
 Pamela Bierman  
 Joshua and Julie Penrod Birky  
 Harlen and Harlen Bland  
 Nancy O. Blayer  
 Patti Jo Boehm  
 Douglas Boelhouwer  
 Susan I. Bonner  
 Ninette R. Boonstra-Andrysiak  
 Daniel P. Borkowski  
 Jose A. Borrero  
 James S. and Mariana L. Bosco  
 George E. Bossi Jr.  
 Robin K. Boyko  
 Sarah D. Bradshaw  
 Robert F. Braswell Sr.  
 Eileen M. Breslin  
 Ron Bright  
 Elissa Brito  
 Ellen S. Brottman  
 Danielle M. Brown  
 Joyce J. Brown  
 Michelle L. Brown  
 Sally J. Brown  
 Spencer Alan Brown  
 Phyllis Lobdell Brussel  
 Joan E. Bryan  
 Gordon J. Buchanan and Duane E. Buchanan  
 Anne B. Bucy  
 Rodney R. and Glenda L. Buhr  
 Robert H. Bunchman  
 Russell I. Bunn  
 Diane N. Burdett  
 Michael F. Burg  
 Ashley Y. Burgardt  
 Robert B. Burns  
 Judith K. Bute  
 Susan J. Buzzard  
 Ivanona W. Cail  
 Gene and LaVonne Cain  
 Clifton C. and Dorothy S. Capp  
 Vincent J. and Frances R. Caputo  
 Kim and Kim Carroll  
 Kathleen A. Casey  
 Renee Catlin  
 Juan M. Cerino  
 Patricia A. Cerny  
 Wardell Chandler  
 Soo-Eun Chang  
 Jack Chase  
 Jonathan Chavez  
 Lynn L. Chenoweth  
 Gary G. and Stacy A. Chiang  
 Rosemary Chiaverini  
 Arlyne J. Chin  
 Betty J. Church

Richard D. Clark  
 Carla J. Clatanoff  
 Annelisa S. Cleary  
 Tina J. Cochran  
 Richard M. and Alice Cody  
 Carolyn S. Collins  
 David B. Collins  
 Nancy T. Collins  
 Frank B. Conci (deceased)  
 Pamela M. Cook  
 Bryan E. M. and Carolyn G. Cooke  
 Delicia C. Cooney  
 Gabriele V. Cooper  
 Kevin P. Corry  
 Joel B. Corush  
 Victoria L. Covington  
 Jane N. Coyle  
 Darlene M. Cozzi  
 Gregory A. and Carol S. Crabb  
 Eldon W. and Marjorie Craddock  
 Myrna P. Cronen  
 Irma F. Crosby  
 James F. Curcuro  
 Denise M. Currier  
 Robert B. Daniel  
 Wayne E. Dannehl  
 Charles L. Darr  
 Evelyn J. Darr  
 Mary Lou Darr  
 N. Benjamin Davidson  
 Holly A. Davis  
 Kathy and Rick Davis  
 Peter A. Davis  
 Rebecca Davis  
 Linda W. Dawe  
 Dawn H. Dawson  
 Isaac N. Dean  
 Paul F. and Lori A. Delahunt  
 Meg De Land-Owen  
 Emanuela Del Core  
 Gilbert H. and Dorothy E. DeMay  
 Allen B. Denison  
 Derwood L. and Gail L. Derickson  
 Darrell J. Dern  
 Margaret R. DesPain  
 Rosemary J. Diaz  
 Carol M. Dismukes  
 William C. Dixon  
 Leasha A. Dixon  
 Joseph Dominski  
 Shirley Donnelly  
 Patricia A. Dost  
 Virginia C. Down  
 Sue K. and James M. Downing  
 Lorene G. Dreska  
 Ed and Ed Dressel  
 Loreen A. Dresser  
 Lynell D'Sylva  
 Indira T. Dubsy  
 Doris I. Posner Duncan  
 Thomas F. Dunleavy  
 Pamela M. Dunn  
 Laura Cooper Dusenberry  
 Nicole L. Eckersberg  
 William J. Eckert  
 Deborah K. Edwards  
 Gregory S. and Jeannette R. Elliott  
 Carol Wicklund Enright  
 Gary N. Ervin  
 Dwight M. Esarey  
 Edward O. and Gail E. Falkowski  
 Janet Sue Fally  
 Susan M. Farner  
 Marllys Farrelly  
 Ellen G. Feiler  
 Ronald S. Feingold  
 William E. Ferry  
 Elizabeth A. Fetter  
 Fred M. and Rosanne K. Fibeger  
 William F. and Judith A. Fierke  
 Hilda Fine  
 Patrick M. Fitzgerald  
 Mark A. Fladeland  
 James P. Fleshman  
 Robert C. Fletcher  
 Jeremy E. Flynn  
 Jennifer A. Foley  
 Robert J. Follis  
 Robert C. and Cheryl M. Foster  
 Bonita S. Franke  
 Janet M. Fuller  
 Susanne French Furey  
 Barbara W. Gaffron  
 Susan M. Gambach  
 John J. Gapsis

Glenn T. and Donna A. Garfinkel  
 David E. Garrett  
 Sandra J. Garrison  
 Leigh Gary and M. Colleen Gass  
 Julie K. Gengler  
 Chad R. Gentry  
 Bessie K. Gerstenberger  
 Betty L. Gerth  
 Ruth H. Getsinger  
 Charles Paul Giambrone  
 Nicholas Giannopoulos  
 Julie A. and Brett G. Gilliland  
 Christie L. Gilson  
 Grant A. Glombicki  
 Marilyn Goehler  
 Donald W. Goetttsch  
 Daniel M. Goggins  
 Tadd E. Goings  
 Kim C. Graber  
 Kathleen A. Gray  
 Lee R. Greenberg  
 Mary E. Gregoire  
 Dolores B. Griglione  
 Richard W. Grimmert  
 James R. and James Gunalek  
 Mary N. Gutsell  
 Dorothy M. Haake  
 Mary Ann Haasis  
 John A. and Rae Anne Haines  
 Kenton A. Hall Jr.  
 Jean P. and Maurice E. Halsey  
 Molly A. Hamer  
 Bradley G. Hamilton  
 Peter A. and Frances M. Hancock  
 Joan Hansen  
 Makiko Harada  
 Aaron C. Hardemon  
 Nancy E. Hardin  
 Mary A. Hardy  
 Therese K. Harmon  
 Stephen H. and Monica H. Harnish  
 Susanna Haro  
 Naomi Harper  
 Una Harrel  
 Dane E. Harrell  
 Ivory Edward Harris  
 Aix B. and Gwen A. Harrison  
 Joseph H. Harrison Jr. and Josephine M. Harrison  
 Carl P. Hartmann  
 Erin Lindsay Hasselberg  
 Robert C. Hawkes  
 Thomas C. Hein (deceased)  
 Meghan A. Heine  
 Jim and Denise Heling  
 Lisa R. Henderson  
 Diane M. Henson  
 Roberta H. Herakovich  
 Derrick Hernandez  
 Martin J. Herzog  
 Maurice A. Hesse  
 Heather L. Hester  
 David Patrick and Susan K. Hilderbrand  
 Clifton Hill  
 Ron and Mary L. Hillen  
 Lois A. Hiltibran  
 Robert W. and Sylvia E. Hinton  
 Sandra C. Hipp  
 Lucas M. Holmbeck  
 Linda L. Hommes  
 David E. and Elizabeth A. Hopkins  
 Nancy G. Horton  
 Joanna M. Hosteny  
 Joan P. and Russell W. Houston  
 Joseph W. and Betty J. Hubbard  
 Bonnie J. Humphrey  
 Joyce Humphries  
 Regina L. Hunter  
 John D. Ingold  
 Jean N. Jenner  
 Ruby Jinks  
 Roberta S. Johnston  
 Steve and Lesa Joiner  
 Allison M. Jones  
 Dale K. and Elizabeth Jones  
 Laura A. Jones  
 George D. Jurinek  
 Paul Kagan  
 Irwin and Deborah A. Kahn  
 Karol A. Kahrs  
 Mark Kampen  
 Lucille M. Kann  
 Suzanne C. Kanter  
 Michael Katsougris  
 Judith L. Kay  
 James E. Kebr  
 Dolores Keller  
 John R. Keller  
 Maddie S. Kelly  
 William R. and Pamela Tawney Kesegi  
 Gerard H. Kickul  
 Susan J. Kiefer  
 David Paul and Sandra L. Kiley  
 Juhee Kim  
 Dennis A. and Debra A. Kimme  
 Alberta M. Kinate  
 Rebecca A. Kirk  
 Kenneth A. Klinicki  
 Howard E. Knapp II  
 Lynne D. Knippler  
 Carrie J. Knox  
 Dana M. and Scott A. Konneck  
 Theodore M. and Deborah L. Konow  
 Mario L. Koonce  
 Robert Korsgaard  
 Gerald W. and Kathleen A. Kortness  
 Helen V. Kossler  
 Mark Remi Koster  
 Wendy J. and Micheal Kostrzewa  
 Joseph J. and Mary Beverley-Kotek  
 Mary L. Kraft  
 Diann Sue Kramolowsky  
 Stanley R. Krasnodabski  
 Erwin H. Krause  
 Judith A. Krecek  
 Tiina A. Kriisa-Leo  
 Dorothy B. Krubel  
 John D. and Elgin D. Krugler  
 Alan G. and Sandra P. Kubbs  
 Robert W. Kueker  
 F. Eric and Pamela Hodges Kulinna  
 Patricia A. Kurinsky  
 Nancy C. and John P. LaBouve  
 Toni M. Lang  
 Matthew D. Langlois  
 James E. and Kathryn A. Lawler  
 Linda Leaf  
 Lorenzo Lee  
 Phyllis M. Leher  
 Renee A. Lehman  
 Don J. Leshner  
 Leslie J. Lesner  
 Tamar N. Lickton  
 Susan M. Limestall  
 Jeanne E. Linak  
 Annette Logan  
 Joseph A. Lokanc Jr.  
 James W. London  
 Carol and Roy Long  
 Galen K. Louis  
 Kathy P. Lundgren  
 Frank D. Lupton Jr.  
 Denise Lux  
 Steven E. and Jane E. Lux  
 Lisa Kathleen Lynch  
 James W. MacIntyre  
 Joann L. Mack  
 Matthew Aaron Maddox  
 Marianne M. Mader  
 Forrest H. Mades  
 Gina Ann Maestranzi  
 Elizabeth F. Mahar  
 Kelsi Maher  
 Vincent L. Mallard  
 Charles G. and Patricia A. Manns  
 Perry James Manos  
 Kelly M. Maples  
 Judith A. Marchesi  
 Julie F. Markowski  
 Christine D. Marszalek  
 Linda L. Mastandrea and Jesse A. Rodriguez  
 Kim Helfrich Mata  
 Bruce L. Maurer  
 Barbara A. Mausser  
 John R. and Loretta M. Mayer  
 Robert E. McAdam  
 Dennis F. McCabe  
 Candice G. McCafferty  
 J. J. and Joyce McCarthy  
 Jamie L. and Kara B. McClintock  
 Gene R. McDonald  
 Gregory McGovern and Camille S. MCGovern  
 Laura Jeanine McGowan  
 Thomas L. McGreal  
 John W. McHugh  
 E. Joan McKissic  
 Margaret A. McLain  
 James M. and JoAnne H. McLean  
 Katherine Anne McNitt  
 LaEisha M. Meaders  
 Thomas O. Meinhardt  
 Jo A. Menacher (CC Silver)  
 Tedd and Ethel Mendelsohn  
 Paul L. and Juanita M. Meunier  
 Anne M. Meyer  
 Jeannine L. Meyer  
 Peggy L. Meyer  
 Larry J. Meyers  
 Richard L. Meynen  
 Genevieve G. Michael  
 Kelly A. Mikols  
 Matthew A. Mikols  
 Malika Miles-Muhammad  
 Richard Lee and Marian L. Miller  
 Sidney G. Miller Jr.  
 Frederick E. and Joyanne Blount Mills  
 Linda S. Mintz  
 Peggy L. Moeck-Bradley  
 Daniel Moges  
 Victoria P. Mogil  
 Craig N. and Ann Marie Molitor  
 Tom and Tom Molitor  
 Pamela J. Mooney  
 Robert C. Moore II and Sue J. Moore  
 R. Gene and Lorna J. Morgan  
 Andrew C. Morgen  
 Marcia Ann Morrison  
 Eleanor J. Mosley  
 Karen L. Most  
 Joel R. Moyer  
 John G. and Linda S. Mullen  
 Daniel P. Murphy  
 David D. Murphy  
 Michael P. Murphy  
 Kenneth W. and Kate R. Muth  
 Pamela J. Muth  
 Phillip E. Nash  
 Christin Marie Nassos  
 Carol W. Neff  
 Arlene L. Neiberg  
 Ruth Ann Nelson  
 Paula and Robert J. Nesbit  
 Christopher M. Newman  
 Kathy W. Newman  
 Sandra Lu and Frederick C. Newport  
 Toshiro and Hiro Nishida (CC Gold)  
 Andrea A. Nolan  
 Gene Nute  
 John D. Oaks  
 Kaye O. Obalil  
 Barbara J. O'Donnell  
 Dennis R. Ohnstaio  
 Lori D. Opiela  
 Rilla D. O'Shaughnessy  
 Nancy Maher Parkinson  
 Eldon C. Partridge  
 Bhadreshkumar B. Patel  
 Larry L. Pater  
 Rebecca Paulsen  
 Gurubasanagouda Payappagoudar  
 John W. Payton  
 Susan A. Pearce  
 John F. Pearson IV and Rebecca L. Pearson  
 Ilene E. Perl  
 Deborah A. Perry  
 Julie J. Perry-Staser  
 Jon P. Pesce  
 Susan J. Peters  
 Andrew F. and Debra Schober-Peterson  
 Patricia R. Peterson  
 John M. Pettit (deceased)  
 Thomas R. Pettit  
 James J. and Laura A. Phillips  
 Michael P. Phillips and Sharon A. Chausow  
 Nan Barrow Pillinger  
 Margie Ping  
 Marilyn M. Ping  
 Christine J. Pletcher  
 Mary Brosious Plumb  
 Ann Pollok  
 Pamela M. Pond  
 Amber L. Postin  
 David L. Powell  
 Bryan G. Pratt  
 Daryl G. Pratt  
 Larry Pratt  
 Kathleen Ann Presgrove  
 Patricia M. Price  
 Eleanor D. Procton  
 Tomasz M. Prokopowicz  
 Peggy J. Pruitt  
 Donald Joseph Puchalski  
 Carol F. Pullen  
 Mary E. Puzey  
 Lou Ann Pyle  
 Miranda L. Quick

Sharon L. Rafos  
Ann M. Rakoczy  
Alexander Ramos  
Roscoe and Marjorie Randell  
Don Howard Rapp  
Michael J. Rathbun  
Jon and Jennifer Rauhouse  
Nancy B. Reece  
Cheryl V. Reeves  
Beth A. Reidelberger  
Glen T. Reimers  
Cheryl Rejc  
Sandra G. Renzelmann  
Peggy R. Reuler  
Belinda M. Rice  
John P. Rice  
Judith S. Rice  
Keith Rich  
Robert A. Rich  
Joseph T. and Beverly Ridgway  
Mark D. Rieger  
Michael W. Ring  
David K. Roberts  
Nancy J. Robey  
James E. Robinson  
Daniel P. Rock  
Richard M. Roderick  
Kenneth J. Rogers  
Bonnie A. Runner  
Victoria Sainato Rupakus  
Lisa A. Ryan  
Carolyn B. Sacks  
Sue S. Safir  
Amy Joy Salatic  
Rod Salazar  
Heather J. Salon  
Helen D. Sapp  
Vedad Sarancic  
Debra J. Savage  
Bruce Saxon  
Donna R. and James C. Scarborough  
Anthony S. Scarcelli  
Patricia N. Scavone-Ely  
Fred and Amy Schaumburg  
George D. Scheber  
Charles R. Schierer  
Barbara E. Schlatter  
Leonard R. and Deborah J. Schmidt  
Patricia R. Schmidt  
DiAnne E. Schmitt  
Gloria June Schobert  
Aaron F. Schoen  
Dale Schuit  
Hans T. Schulte  
George and George Schwarz  
Teresa A. Schwarz  
Sarah A. Sciorfino  
Kathleen A. Scott  
William R. and Kathryn J. Scott  
Brian P. and Jennifer A. Draudt-Scully  
Carolyn B. Sealock  
Marcia J. Seaton  
Carol Hubbard Seery  
Judith M. Seidband  
Elaine M. Sensiper  
Florence E. Sexton  
Angela K. Shaffer  
David C. and Annilee A. Shaul  
Rebecca L. Sheridan  
Marilyn E. Shewan  
Kailash T. Shinde  
Samuel B. Shoor  
Gerold W. and Dorothy M. Showalter  
Richard L. and Virginia P. Siegle  
Jeffrey H. and Marci Kolber Sieracki  
Thomas E. Silkey  
Alfonso Silva Jr.  
Martin B. Silverman  
Conrad Siu  
Robert and Kay Jarvis-Sladky  
Paula J. Sloan  
Edward L. Sloniger  
Ann L. Smiley-Oyen  
Johanne M. Smith  
Victor L. Smith  
Linda A. Snider  
Kim P. Snyder  
Catherine A. Somers  
Mark A. and Cheri M. Somratty  
William E. Sone  
Kara C. Sorensen  
Eugene J. Spannenberg  
Anne F. Spier  
Alice M. Sporar  
Daniel S. Sprung

Murray L. and Arla Hope Sprung (CC Silver)  
David C. and Regina Stanger  
Betty J. M. Starks  
Anne C. Stefanski  
Terry A. Steilen  
Ken and Ken Stein  
Richard and Carol Stein  
Carol H. and O. T. Steinman  
Marlyn Ligner Steury  
Stanislaw Stoch  
Dean A. and Kelly M. Stoeber  
Donald B. Stone  
Robert K. Stone  
Arthur D. Strom  
Roy M. Strom and Joan T. Strom  
Patricia Ann Strube  
Julie A. Sundborg  
Gregory D. and Susan L. Sunvold  
Kathleen A. Supert  
Charles E. Swain  
Susan C. and Mark S. Szoke  
Robert J. Szyman  
David J. Tabela  
Helen S. Taffel  
Joseph A. Tanny  
Alison P. Taskovic  
Albert Barry Taylor Jr. and Juanita Taylor  
William R. Taylor II and Rebecca H. Taylor  
Richard L. Thomas  
Carol A. Thompson  
Michelle Simone Thompson  
Donna H. Thorp  
Rachel E. Thorstenson  
Jean K. Thouvenot  
Troy R. and Rebecca M. Throneburg  
Garrett S. Timbie  
Ronald R. Timpson  
Toni-Anna B. Tindall  
Meta Rose Torchia  
Christopher G. and Tishika L. Townsend  
Melissa C. Tungate  
Timothy A. and Julie A. Turcich  
Lucille Turigliatto  
Albert E. Turner  
Diane L. Umland  
Edna Underwood  
Heather L. Usher  
Ugur Uygun  
Joseph P. and Erin F. Vance  
Robert E. Vance Sr.  
Brent A. VanDamme  
John R. and Martha E. Van Horn  
Mimi and Jim Vatterott  
June Becvar VerSchave  
Aurora S. Villacorta  
Deborah A. Visin  
Thomas D. and Lynn Karen M. Vogelsinger (CC Gold)  
Patricia A. Vollmer  
Vernell and Raymond Vollmer  
James E. and Laura B. Vollrath  
Richard T. and Laurel J. Voss  
Michael G. Wade  
Christopher T. Wagner  
John R. Wainwright  
Marshall Wall  
Oscar Wallace Jr.  
John P. and Mary Ann. M. Walsch  
C. E. Walters  
Yong T. Wang and Wei Shi  
Thomas J. and Jeanne A. Ward  
Ruth Ann Warms  
Larry Warshawsky  
Coretta P. Washington  
William R. Waud  
Morton I. and Lorraine R. Wax  
Timothy D. Weatherill and Karen M. Larken  
Jan Bergman Weinstein  
Betty Wellbaum  
Pete and Sue Weslow  
Carolyn J. Wessel  
Nancy E. Westcott  
Marcia H. Wetherby  
Myrna White  
Robert White  
James B. Whiteside  
Tedmond D. Whitten  
David D. and Joanne E. Wickersham  
Marion Wienke  
Laura Wilhelm-Barr  
Carrie J. Wilkerson  
Patricia F. Williams  
Eric B. and Joanna M. Williamson  
Daniel P. and Lynn M. Winkler  
John Winter  
Todd C. and Courtney Winter

John C. Wirth  
David M. Wishart  
Cheryl A. Wittler  
Donald K. Witzig  
Steven C. Wohlwend  
Cecille Wolochuk  
Brett W. and Linda M. Wolters  
Tamara M. Woodard  
Anne C. Woodley  
Dean E. Woodward  
Donald and Donna Marie Woodworth  
Judith C. Wootton  
Bonnie K. Wright  
Judith Ann Wright  
Rollin G. and Helen G. Wright  
Dwight J. Yeager  
Kimberly S. Youngvorst  
Enia Zaidel  
Philip E. and Marlene U. Zapp  
Marcia A. Zegar  
Joyce Zimmerman  
Hyman J. Zuckerman  
F. Thomas Zwetschke

## **CORPORATIONS, FOUNDATIONS, AND ORGANIZATIONS**

Abbott Fund  
ABC Home Medical  
Advisor Charitable Gift Fund  
Aetna Foundation, Inc.  
American Association of Adaptedsports Programs, Inc.  
American College of Sports Medicine  
American Heart Association  
American Lung Association of the Upper Midwest  
Applied Health Sciences Student Council  
Autism Speaks  
Burlington Northern Santa Fe Foundation  
C & K Heating and Cooling, Inc.  
Caterpillar Foundation  
Coldwell Banker Brown Realtors  
Commerce Bank  
Consortium of MS Centers  
Cooper Consulting LLC  
Dairy Management Inc.  
Dell Direct Giving Campaign  
Ernst & Young Foundation  
Event Photography Group  
ExxonMobil Foundation  
Fulton Property Management  
Gatorade Sports Science Institute  
General Electric  
General Mills Foundation  
GivingExpress Online From American Express  
GlaxoSmithKline Foundation  
Goldman Sachs & Company  
Human Kinetics  
IBM Matching Grants Program  
Illinois Assoc. for Health and Physical Education Recreation  
Illinois Tool Works Foundation  
International Business Machines  
Janet's Hair Design  
John Deere Foundation  
Kinesiology Student Association Department of Kinesiology  
Kraft  
Lockwood Family Foundation  
Microsoft  
Mobility Center of Chicago, Inc. DBA Amigo Mobility Center  
Monsanto Fund  
Mozilla Foundation  
National Association for Sport and Physical Education  
National Multiple Sclerosis Society  
National Student Speech Language Hearing Association  
Northrop Grumman Foundation  
Northwestern Mutual Life Foundation, Inc.  
Paul Schulte Foundation  
Pepsico Foundation  
Premier, Inc.  
Robert Wood Johnson Foundation  
Sagamore Publishing, Inc.  
Shaeffer's Chapel United Methodist Church  
Shell Oil Company  
Sidell Agri-Services, Inc.  
State Farm Companies Foundation  
The Cooper Institute  
The John D. and Minnie R. Schneider Charitable Trust  
The Louis J. Allabro Trust  
Verizon Foundation  
Wisconsin Energy Corporation Foundation, Inc.  
Yamato Corporation

# AHS E-NEWS

**If you haven't already done so, be sure to subscribe to AHS E-News.**

Each of the three free issues per year is filled with interesting stories about the outstanding people, programs, and accomplishments of the College of Applied Health Sciences.

Visit [ahs.illinois.edu/About/Newsletters.aspx](http://ahs.illinois.edu/About/Newsletters.aspx) to subscribe.

Campaign Leadership Advisory Council  
College of Applied Health Sciences  
2010-2012

**Leisa Barger**

Senior Vice President of Marketing  
The Retail Connection  
Dallas, Texas

**Ron Barger**

Senior Vice President and General Counsel  
Archon Group, L.P.  
Irving, Texas

**Judith A. LeDuc**

Judith A. LeDuc and Associates  
Chicago, Illinois

**Ann Carlson Khan**

Vice President  
Khan Family Foundation  
Champaign, Illinois

**Carolyn Campbell-Phebus**

Design Consultant  
Urbana, Illinois

**Richard F. Schweig**

Northwestern Mutual Financial  
Chicago, Illinois

Ex officio:

**Tanya Gallagher, Dean**

College of Applied Health Sciences

**Sara Kelley**

Assistant Dean for Advancement  
College of Applied Health Sciences

**Jean Driscoll**

Associate Director of Development  
College of Applied Health Sciences

# College of Applied Health Sciences

110 Huff Hall  
1206 South Fourth Street  
Champaign, IL 61820

Non-profit  
Organization  
U.S. Postage  
PAID  
Permit No. 75  
Champaign, IL

[www.ahs.illinois.edu](http://www.ahs.illinois.edu)

#### **AHS Administrative Council**

Dean: Tanya M. Gallagher  
Associate Dean for Academic Affairs: William Stewart  
Assistant Dean for Academic Affairs: Renique Kersh  
Assistant Dean for Advancement: Sara Kelley  
Assistant Dean for Administration and Technology: Bill Goodman

#### **Department and Unit Heads**

Kinesiology and Community Health: Wojtek Chodzko-Zajko  
Recreation, Sport and Tourism: Cary McDonald  
Speech and Hearing Science: Adrienne Perlman  
Division of Disability Resources and Educational Services: Brad Hedrick

Associate Director of Communications: Kent Reel  
Editor: Anna Flanagan  
Designer: Debby Winter, Winteraven  
Photography: Thompson-McClellan, L. Brian Stauffer, College of Applied Health Sciences

